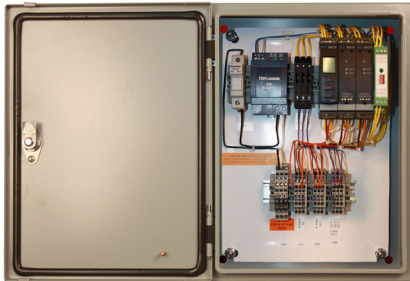


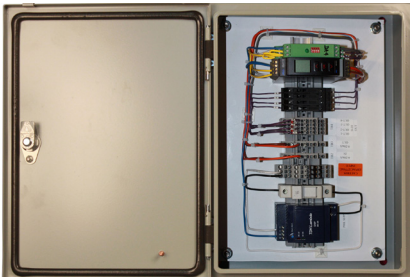
RDE / RDR

Remote Dimming Enclosure /
Remote Dimming Repeater
Tunnel Lighting Control System

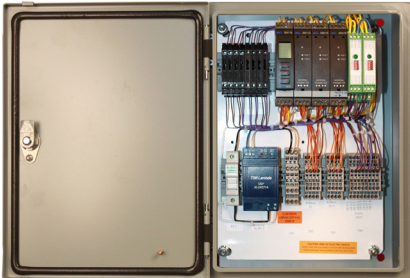
RDE



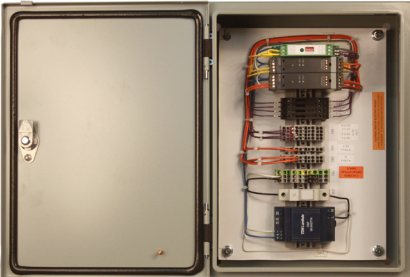
RDE1



RDE4



RDR1



PROJECT	
LOCATION	

FEATURES

- Four channels outputs
- 4-20mA signal communication
- Failsafe Override
- Operator Interface Terminal override
- RDE installed every 500ft and followed by an RDR
- UL508A , CAN/CSA C22.2 14-M91 listing
- 2 year warranty

TECHNICAL DATA

Primary Voltage:	120-277VAC
Secondary Voltage:	24VDC
Secondary Supply Amps:	1.5A
Dimming Amps:	200mA
Output Channels:	1-4
Controller Communication:	4-20mA
Control Media:	16AWG TSP
Failsafe Override:	PLC Breaks 4-20mA
Max Override:	OIT Manual
Min Override:	OIT Manual
Listing:	UL508A, CAN/CSA C22.2 14-M91

DESCRIPTION

PLC-Multipoint RDE is a remote dimming enclosure and the RDR is a remote dimming repeater enclosure. Both enclosures are designed to work together to provide dimming signals to the LED drivers. Both enclosures receives input signal from the PLC via 4-20mA and provide signal to the next remote dimming repeater enclosure.

Each remote dimming enclosures followed by the remote dimming repeater are installed every 500ft with a control

zone of 250ft going both direction of LED fixtures. (See block diagram drawing).

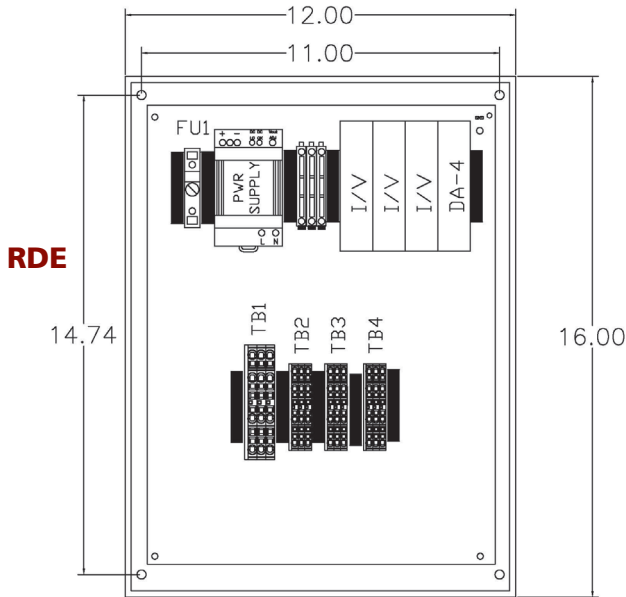
The architecture assembly is very simple; it consists of power supply, fuse, current to voltage converter, dimming driver and terminal blocks for input and output signal power. Both RDE and RDR are housed in a NEMA12 enclosure, pre-wired and tested to UL508, CAN/CSA C22.2 14-M91 requirements for industrial control equipment.

If you have any questions, please call us toll-free at 1-866-998-5483
3101 111th Street SW • Suite F • Everett, WA 98204
425-353-7552 • Fax: 425-353-3353 • www.plctransportation.com

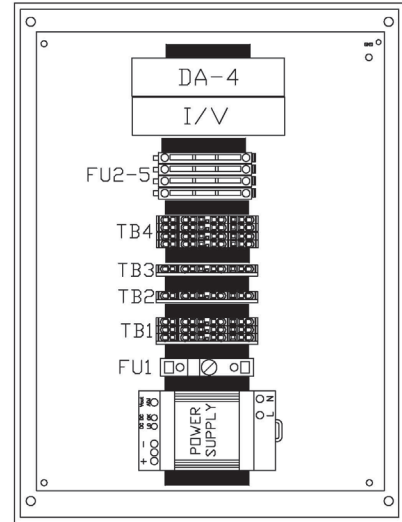
A Division of PLC Multipoint, Inc.



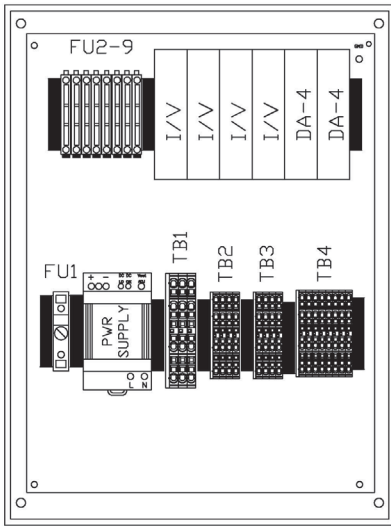
DIMENSIONS:



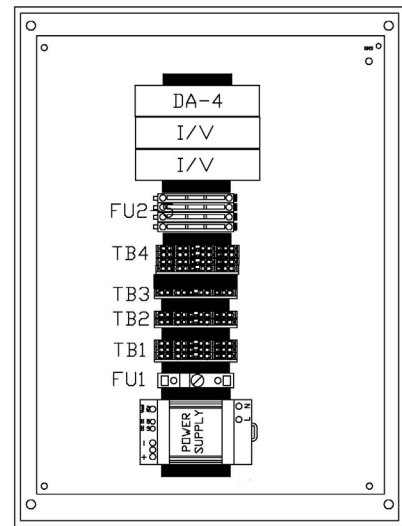
RDE1



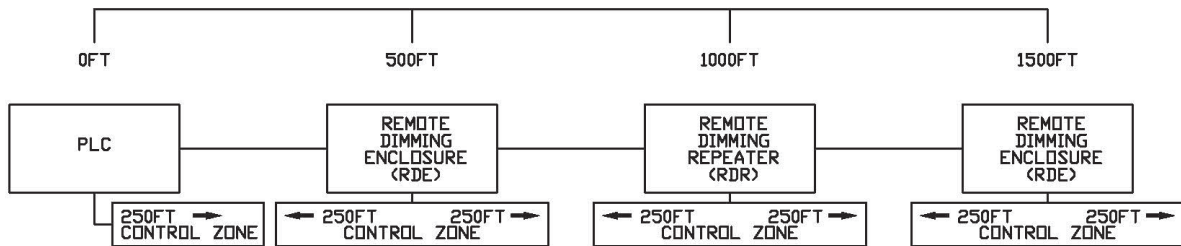
RDE4



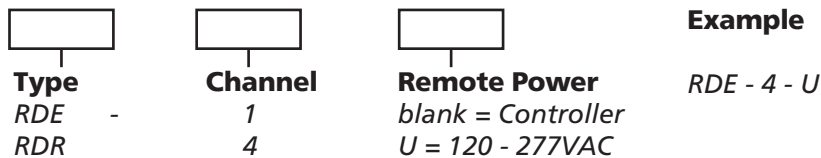
RDR1



ONE LINE BLOCK DIAGRAM:



ORDER INFORMATION:



If you have any questions, please call us toll-free at 1-866-998-5483
 3101 111th Street SW • Suite F • Everett, WA 98204
 425-353-7552 • Fax: 425-353-3353 • www.plctransportation.com

301 RDE/ RDR Rev0.1



A Division of PLC Multipoint, Inc.

